

FOR IMMEDIATE RELEASE

NORIYORI SHIRAKAWA SOLO EXHIBITION “I.L.L.U. of Blue”

Date: January 27 – March 25, 2017
(Open on Friday and Saturday and otherwise by appointment)
Hours: 11:00am - 6:00pm

Opening reception 5:00-7:00pm, January 27 (Fri)

* * * * *

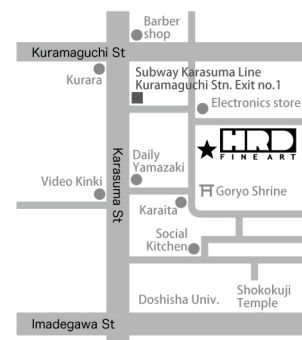
HRD FINE ART is delighted to announce a solo exhibition of Noriyori Shirakawa, entitled “I.L.L.U. of Blue,” which will showcase about six pieces of the artist’s work.

Noriyori Shirakawa was born in Tokyo in 1969. He earned his MFA degree in painting at the Tokyo University of the Arts, and he currently teaches at the Aichi Prefectural University of Fine Art and Music while at the same time actively creating and exhibiting his artworks in Japan as well as abroad. He has also engaged in several collaborative research projects in painting techniques and materials.

One defining characteristics of Shirakawa’s work is the use of metal leaf such as silver or aluminum leaf, which is intrinsically connected with the exploration of painterly expression of light. His paintings are elaborately and delicately constructed, backed up by his deep knowledge and insight into painting techniques and materials. Firmly standing upon the long historical tradition of painting that has pursued three-dimensional illusion on two-dimensional plane, Shirakawa is making quiet but consistent efforts to open up a new horizon for Japanese contemporary painting.

* * * * *

For further information or artwork images please visit our website at www.hrdfineart.com or email us at info@hrdfineart.com.



[ARTIST'S BIOGRAPHY]

Noriyori SHIRAKAWA

- 1969 Born in Tokyo
 1993 BFA in oil painting, Tokyo University of the Arts, Tokyo
 1995 MFA, Tokyo University of the Arts, Tokyo
 Lives and works in Aichi

Selected Solo Exhibitions

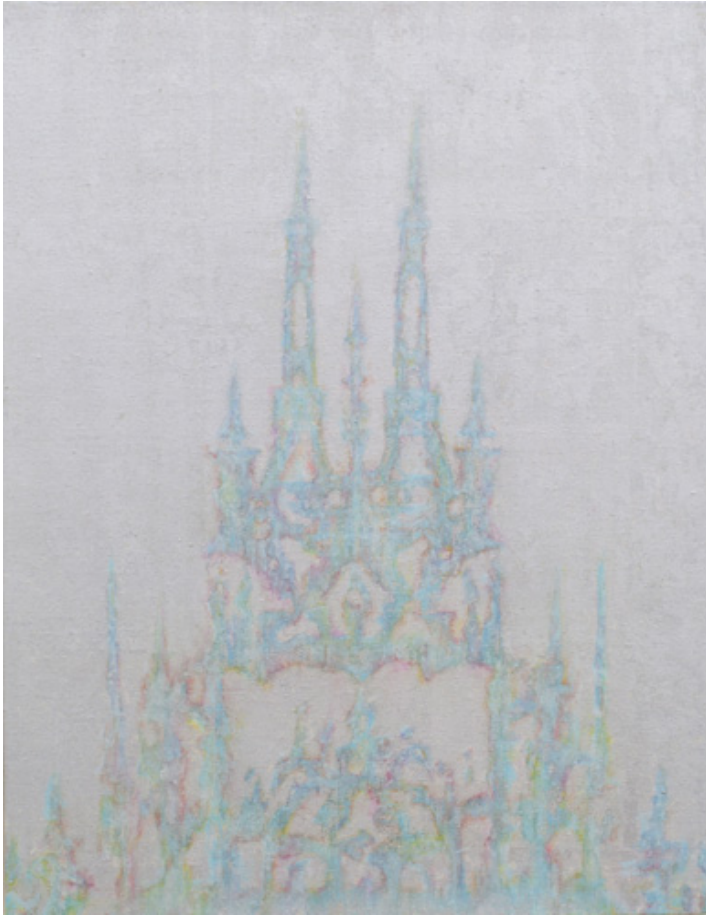
- 1996 "L'ESPOIR 1996: Noriyori Shirakawa" Ginza Surugadai Gallery, Tokyo
 1997 "Noriyori Shirakawa Exhibition" Ginza Seigetsudo Gallery, Tokyo
 1998 "NORIYORI SHIRAKAWA" Ginza Seigetsudo Gallery, Tokyo
 2004 "Kokoro-no-katachi: Noriyori Shirakawa" Gallery Garando, Nagoya
 2006 "Valeur on Canvas" Ginza Goraku Gallery, Tokyo
 2010 "Light on Canvas" Gallery Garando, Nagoya

Selected Group Exhibitions

- 2000 "GROUP EXHIBITION" Ginza Inoue Garou, Tokyo
 2001 "ART FORM OF JAPAN" The Suan Dusit Art Gallery, Bangkok
 2002 "Three-man Exhibition" Hasegawa Kukansozo Company, Tokyo
 "NEW TRADITIONAL ART" Silpakorn Univeristy Art Center, Bangkok
 "Three-man Exhibition" Gallery Garando, Nagoya
 2003 "Aoi-no-kai" Ginza Surugadai Gallery, Tokyo (every year though 2016)
 "FIELD OF NOW" Ginza Yokyo Art Hall, Tokyo
 2004 "New Century of Western Painting" Ginza Yokyo Art Hall, Tokyo
 2005 "Ten by Ten Small Universe" Gallery Alpha, Nagoya
 2006 "Toki-no-kaze" Seibu Shibuya Art Gallery, Tokyo
 "CONNECT [Impression on Paper]" Silpakorn Univeristy Art Center, Bangkok
 "LIONCEAUX 2006" Nihombashi Mitsukoshi Art Gallery, Tokyo (also in 2007, 08, 09, 10)
 2007 "The Testimony of Self-portraits" The University Art Museum of Tokyo University of the Arts, Tokyo
 2009 "Octave" Gallery Garando, Nagoya
 2010 "GOLD EXPERIENCE" Hyun Gallery, Seoul
 2011 "JUNINTOIRO" Gallery Garando, Nagoya
 "LIONCEAUX PLUS" Nihombashi Mitsukoshi Art Gallery, Tokyo
 (also in 2012, 13, 14, 15)
 2012 "Building a Castle of Sand (or Breaking It)" Next Door Gallery, Seoul
 "FORMS IN FLUX" Grossman Gallery, Boston
 "GOLD EXPERIENCE 2: Homage to the Golden Tigerfish" Satellite Gallery of Aichi Prefectural University of Fine Arts and Music, Nagoya / Jokaiso (former Takeuchi Residence), Komaki

- “NORIYORI SHIRAKAWA + KUNIAKI YAMAMURA” Gallery Shun, Nagoya
- 2013 “FORMS IN FLUX” Nagoya/Boston Museum of Fine Arts, Nagoya
- 2014 “CUBIC MUSEUM” Silpakorn Univeristy Art Center, Bangkok
- 2016 “Gizai-hentai” Satellite Gallery of Aichi Prefectural University of Fine Arts and Music,
Nagoya
- “Painting as Material” Senbyakudo Garou, Tokyo

[ARTWORKS]



V-C-Light-2015

aluminum leaf, tempera, oil on chalk grounded canvas 53x40.9cm 2015



V-C-Light-2015

aluminum leaf, tempera, oil on chalk grounded canvas 31.8x40.9cm 2015