

BUILDING A CASTLE OF SAND (OR BREAKING IT) – ART FROM AICHI –

INTRODUCING ARTISTS FROM AICHI PREFECTURAL UNIVERSITY OF FINE ARTS AND MUSIC

Press Release

Date: January 26 – February 12, 2012
Venue: Next Door Gallery, Seoul
<http://www.nextdoorgallery.co.kr>
122-8 Changseong-dong, Jongno-gu, Seoul 110-034 Korea
Curation: HRD Fine Art
<http://www.hrdfineart.com>
494-1 Kamigoryo-tatemachi, Kamigyo-ku, Kyoto-shi, Kyoto 602-0896 Japan
Artists: Hisashi Kurachi, Nobuyuki Osaki, Noriyori Shirakawa, Ayako Kurihara

Cooperation: Aichi Prefectural University of Fine Arts and Music

Opening reception: January 26, Thursday, from 5pm

Introduction

A group exhibition of Japanese artists, titled “Building a Castle of Sand (or Breaking It) – Art from Aichi,” will be held in Seoul in January 2012.

Aichi Prefectural University of Fine Arts and Music is known as one of major art universities in Japan, having produced a host of internationally renowned artists. In this exhibition four Japanese artists who have had a bond with the University – some studied here and others currently teach here as professor or as lecturer – will be introduced to the art-loving audience in Seoul, in the hope that it will open up a new channel of cultural exchange and better mutual understanding between Korea and Japan through contemporary art, displaying art not from all-monopolizing Tokyo but from Aichi.

Besides the fact that they all have all connected to the Aichi Prefectural University of Fine Arts and Music, works of these four artists (Hisashi Kurachi, Nobuyuki Osaki, Noriyori Shirakawa, and Ayako Kurihara) share a common interest; which can be

described as “vulnerability of reality” or “unreliability of what can be seen.” Regardless of the difference of media, ranging from painting to print, from photograph to video installation, all of these artists acknowledge the inherence of “illusion” in visual art and try to use “illusion” in ironic ways.

The phrase used in the exhibition title, “castle of sand,” represents the uncertainty and unreliability of what we can see and touch. However elaborately made, a castle of sand in the beach is no real castle; it’s just a copy of a real castle, an image. What is real about the castle is a myriad of sand, construing the whole but we tend to ignore the existence of sand just until the castle is no more to be found, washed away with the ocean waves. Which is similar to the process of our perception of reality; we incessantly attempt at grasping and concretizing the world as we see in front of us, only to find it is gone already. We repeat this again and again, seemingly without any hope of capturing the true face of the world.

However hopeless and in vain it may seem, it is nevertheless a fruitful and even fun process to build and to break down a castle of sand repeatedly. This exhibition “Building a Castle of Sand (or Breaking It)” aims at visually presenting the meaningfulness of our effort of constructing, nullifying, and re-constructing the shape of the world.

Lectures and talk sessions planned alongside the exhibition will also provide a refreshing opportunity for both the participating artists from Japan and art specialists in Korea to meet new people and receive stimuli for further creation.

For more information please contact HRD FINE ART:

Postal Address: 494-1 Kamigoryo-tatemachi, Kamigyo-ku, Kyoto 602-0896 Japan

<http://www.hrdfineart.com/> / info@hrdfineart.com

Artists

Hisashi Kurachi

- 1961 Born in Nagoya
1984 BFA, Department of Oil Painting, Aichi Prefectural University of Fine Arts and Music
1986 MFA, Department of Oil Painting, Aichi Prefectural University of Fine Arts and Music

Lives and works in Aichi, Japan

Selected Solo Exhibitions

- 1985 Gallery Hakuzen, Nagoya
1988 Gallery Surugadai, Tokyo
1989 Gallery Garandou, Nagoya (also in 1995, 98, 2000, 04 and 07)
1994 Gallery Art Box, Tokyo
Gallery Shin, Tokyo (also in 1996)
1997 Gallery Tomy, Tokyo
1998 Gallery Etsuko Shibata, Tokyo (also in 2003)
2004 "Exhibition of Hisashi Kurachi" Oguchi Historical Folk Museum, Oguchi Town, Aichi

Selected Group Exhibitions

- 2001 "J:Mai Japan-Magyar Grafika" Pecsí Gareria, Hungary
"VI. International Biennial Győr" Varosi Museum, Hungary
2002 "The 5th Kochi International Triennial Exhibition of Prints" Ino-cho Paper Museum, Kochi
"Seoul International Print Biennale" Seoul, Korea
"A Hatodik Mai Japan-Magyar Grafikai Kiállítás" Foyer Gallery at Kamiyamada Culture Hall, Chikuma, Nagano
2004 "Contemporary Printmaking Exhibition" Kurobe City Art Museum, Kurobe, Toyama
2005 "Current of the Contemporary Prints" Machida City Museum of Graphic Arts, Tokyo / Matsumoto City Museum, Matsumoto
2006 "Aichi Silpakorn Exchange Art Exhibition" Center Gallery Silpakorn University, Bangkok, Thailand
2007 "Show me THAI" Tokyo Contemporary Art Museum, Tokyo
2008 "MAXI GRAPHICA Final Destinations" Kyoto Municipal Museum of Art, Kyoto
2009 "Double Diablerie" Artist in Residence, E.C.A, Edinburgh, UK
"AICHI ART-NO-MORI" Warehouse of Horikawa, Nagoya

Awards

- 1994 Prize-Winner, The Hanga Annual
- 1999 Triennial Prize, 12th Norwegian Print Triennial, Norway
Silver Medal, The 9th Taiwan International Biennial Print and Drawing Exhibition,
Taipei Museum, Taipei, Taiwan
- 2005 Epson Prize, Epson Color Imaging Award 2005, Tokyo
- 2006 Rector of the Academy of Fine Arts in Warsaw Prize, International Print Triennial
Krakow
- 2007 Nagoya City Art Recommendation Prizes
Special Prize, Sprit Graphic Biennial, Croatia
- 2009 Excellent Prize, 2nd Bangkok Triennial

Collection

Materials Museum of Aichi Prefectural University of Fine Arts and Music
Machida City Museum of Graphic Arts
Museum of Kitanotani, Chiba
Tikotin Museum of Japanese Art, Haifa, Israel
Taipei Fine Arts Museum
Norwegian Print Triennial
Kurobe City Art Museum, Kurobe, Toyama
Oguchi Historical Folk Museum, Oguchi Town, Aichi
Dacca University, Dacca, Bangladesh
Silpakorn University, Bangkok
Academy of Fine Arts in Warsaw, Poland
Fuso Town Cultural Hall, Aichi

Ayako Kurihara

1974 Born in Yokohama

1999 BFA in Oil Painting, Aichi Prefectural University of Fine Arts and Music

Lives and works in Yokohama, Japan

Selected Solo Exhibitions

2006 "Mind Games" BankART Studio NYK, Yokohama

2007 "New Map" BankART Studio NYK, Yokohama

"Untitled / Ayako Kurihara" Gallery Maki, Tokyo

2007-08 "Open Studio: Ayako Kurihara Project Room" BankART Studio NYK, Yokohama

2009 "fiction/error" Gallery Maki, Tokyo

"Open Studio: Mind Games 2009 in Sakuraso" BankART Sakuraro, Yokohama

2010 "Open Studio: Mind Games 2010" BankART Studio NYK, Yokohama

"Pictures" Edwin R. Molenaar Atelier, Yokohama

2011 "Conversation with Mr. H" Demado Contemporary Art Project, Kyoto

Selected Group Exhibitions

1997 "Battadofu - Rolling Library" Nagoya City Midori Library, Nagoya

2007 "CET07 - Central East Tokyo 07" Taigaku Bldg., Tokyo

"Light Room vol.4 - Yamate No.111 Library Exhibition" Yamate No.111, Yokohama

"Open Studio: Atelier Gake + Kotori Café" Atelier Gake, Yokosuka

2008 "Self Portrait" Gallery Sakamaki, Tokyo

"Blue Dot Asia" Seoul Arts Center, Seoul, Korea

"Food and Contemporary Art part 4 (Yokohama Geijutsu Noren-gai)" BankART

1929 Yokohama / Iseya, Yokohama

"Open Studio: Atelier Gake + Kotori Cafe + Oto" Atelier Gake, Yokosuka

Collaborations / Projects

2011 Video projection work for theatrical performance "Rose: A Woman's Life"

Video projection work for oriental dance show "Love"

Performance "Mind Games 2011 vol.2 Conversation with Kanako Nagai"

Nobuyuki Osaki

- 1975 Born in Osaka
1998 BFA, Print Making Department, Kyoto City University of Arts
2000 MFA, Kyoto City University of Arts
Lives and works in Aichi, Japan

Selected Solo Exhibitions

- 2001 "Between Inside and Outside" Galerie 16, Kyoto / Inart Gallery, Osaka
2002 "Distance of Interval" O-Gallery eyes, Osaka / O-Gallery UPs, Tokyo
2003 "Cutaneous Respiration" Osaka Contemporary Art Center
"Distance of Interval" CAI, Hamburg
"Between Inside and Outside" Kunstraum, Dusseldorf
2004 "Landscape" Luce Verde Open Space, Ehime
"Skin of Images" Gallery Jin, Tokyo
2007 "Meltdown on the Reality" Gallery Jin, Tokyo
2008 "Phantom" Galerie 16, Kyoto
"Meltdown" Kyoto Art Center
2009 "Phantom - water drawing" Mikiko Sato Gallery, Hamburg
2010 "Dimension Wall" Gallery Hosokawa, Osaka
"Falls" Yuka Contemporary, Tokyo
"Portraits of Mirror" Standing Pine Cube, Nagoya

Selected Group Exhibitions

- 1998 "PRINTS 10" City Gallery I.M., Osaka
"Prints Artist of the New Generation '98" Gallery Coco, Kyoto
"KAVC Art Annual-Thinking of Photo Images" KAVC, Kobe
2001 "Nomart Projects 2001 - Image on Image" Nomart Editions Project Space, Osaka
"PRIMARY STATEMENT" O-Gallery eyes, Osaka
2002 "ISEA2002 Mediaselect Program - The immortal space" Nagoya Citizens Gallery
Yada, Nagoya
"Selected Artists in Kyoto-2002" The Museum of Kyoto, Kyoto
2004 "Power of Printmaking" The Museum of Kyoto, Kyoto
2005 "Masterpieces from the Permanent Collection I: The Seeing 'I'" Kyoto
Municipal Museum of Art, Kyoto
"Enhanced Organism" CASO, Osaka
2006 "Dream of Dreaming" Gallery Raku, Kyoto
2007 "5-7-5" Kunsthaus Hamburg
"Re-Act" Hiroshima City Museum of Contemporary Art, Hiroshima

- “Distance of Printmaking” Kyoto Art Center, Kyoto
- 2009 “12th Japan Media Arts Festival” The National Art Center, Tokyo
 “Exotic” Aichi Children's Center, Aichi
- 2010 “AICHI GEEN” Aichi Prefectural University of Fine Arts and Music University Art
 Museum, Aichi
 “volatilecolors” Masayoshi Suzuki Gallery, Okazaki, Aichi
 “Aichi ART no Mori” Toyo Logistics Tenant Building, Nagoya
- 2011 “Haut. Mythos und Medium” Kunsthaus Hamburg
 “TOUGEN” Masayoshi Suzuki Gallery, Okazaki, Aichi

Awards and Grants

- 1996 Purchase Award at "The 21st Annual Exhibition of The Association of Japanese Art
 Colleges" (also in 1997, 98 and 99)
- 1998 Matsubara Award at Exhibition of Kyoto City University of Arts
 Suda Prize at "Kyo-ten"
- 2000 Alumni Association Cultivate Award at Exhibition of Kyoto City University of Arts
- 2001 Purchase Prize Kyoto Municipal Museum of Art Award at "Kyo-ten"
 The 16th Holbein Scholarship Grant
- 2002 The 4th Art Documents Support Program by Shiseido Co., Ltd.
- 2003 Osaka Prefectural Government's Artist-in-Residence Program "ART-EX"
- 2008 Art Contest at Kyoto Art Center 2008
- 2009 Jury Recommended Work at “12th Japan Media Arts Festival”

Collections

- Machida City Museum of Print Art, Tokyo
- Kyoto Municipal Museum of Art, Kyoto
- Kyoto City University of Arts, Kyoto
- Sannohe Town Print Workshop (former Sannohe Town Contemporary Print Center),
 Sannohe Town, Aomori
- Sekiguchi Museum, Tokyo

Noriyori Shirakawa

- 1969 Born in Tokyo
1993 BFA in oil painting, Tokyo University of the Arts, Tokyo
1995 MFA, Tokyo University of the Arts, Tokyo
Lives and works in Aichi, Japan

Selected Solo Exhibitions

- 1996 Ginza Surugadai Gallery, Tokyo
1997 Ginza Seigetsudo Gallery, Tokyo (also in 1998)
2004 Gallery Garando, Nagoya (also in 2010)
2006 Ginza Goraku Gallery, Tokyo

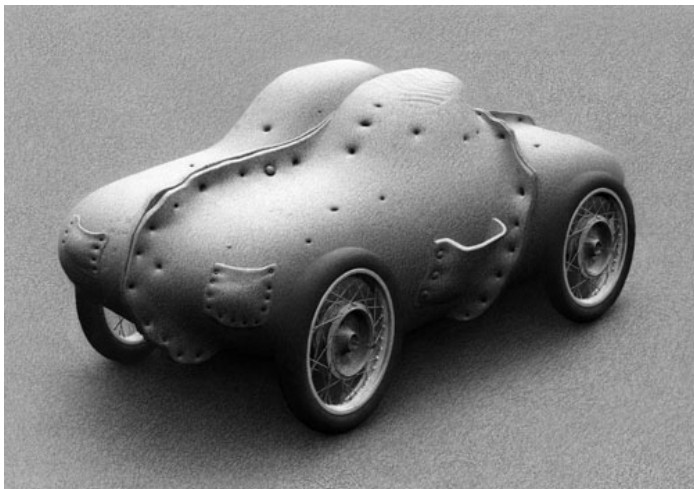
Selected Group Exhibitions

- 1995 Ginza Seigetsudo Gallery, Tokyo
1997 Shinjuku Zenrosai Hall Gallery Space Zero, Tokyo
2001 "ART FORM OF JAPAN" The Suan Dusit Art Gallery, Bangkok
2002 Hasegawa Kukansozo Company, Tokyo
"New Traditional Art" Silpakorn University Art Center, Bangkok
Gallery Garando, Nagoya
2003 "Aoi-no-kai" Ginza Surugadai Gallery, Tokyo (also in 2004, 05, 06, 07, 08 and 09)
"FIELD OF NOW" Ginza Yokyo Art Hall, Tokyo
2005 "Ten by Ten Small Universe" Gallery Alpha, Nagoya
2006 "CONNECT [Impression on Paper]" Silpakorn University Art Center, Bangkok
2009 "Octave" Gallery Garando, Nagoya
2010 "Gold Experience" Hyun Gallery, Seoul
2011 "JUNINTOIRO" Gallery Garando, Nagoya

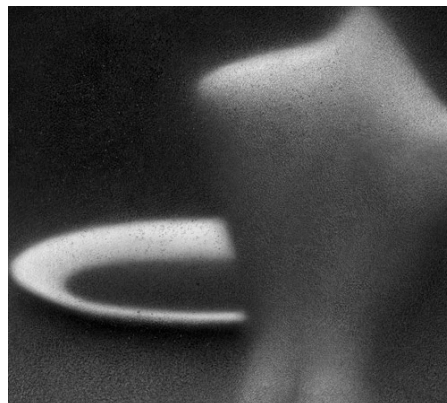
Collections

- Embassy of Peru in Japan, Tokyo

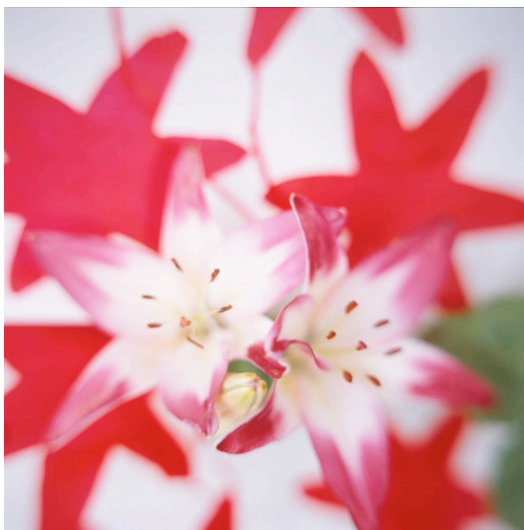
Artworks



Hisashi Kurachi "new model"
Lambda print on acrylic mount
57.6×109.7cm / ed.20 / 2006



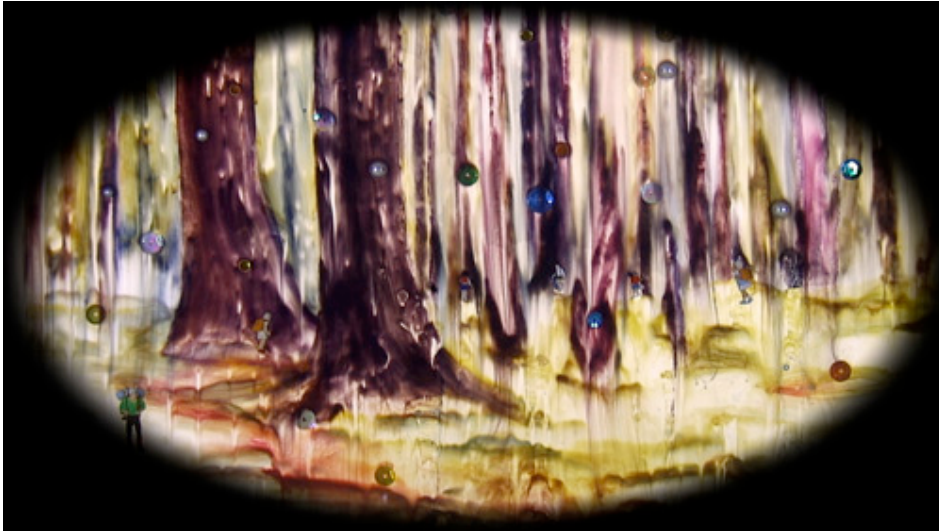
Hisashi Kurachi "behind"
Lambda print on acrylic mount
50×55.8cm / ed.25 / 2011



Ayako Kurihara "Twin Star 02"
inkjet print on acrylic mount
40×40cm / ed.10 / 2008



Ayako Kurihara "powan 6"
inkjet print on acrylic mount
40×40cm / ed.10 / 2008



Nobuyuki Osaki "Shining Forest / Climbing the World"

video still

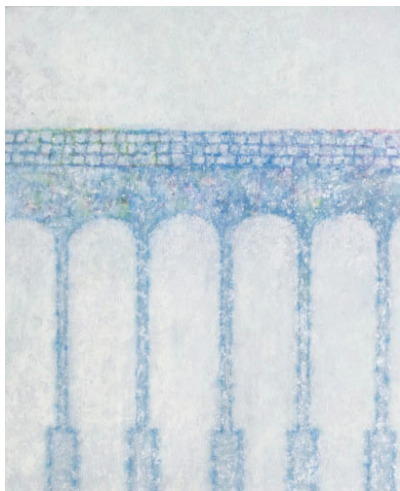
2010



Nobuyuki Osaki "dimension wall"

video still

2011



Noriyori Shirakawa "V-C-Light-2011"

aluminum leaf, tempera, oil on chalk
grounded canvas

60.6×50cm / 2011



Noriyori Shirakawa "V-C-Light-2011"

aluminum leaf, tempera, oil on chalk grounded canvas